

Distribution Solutions
Construction



ArcelorMittal

Product overview Specials



Table of contents

Product overview

	page
Point profiles	4
Isis 33.80.880	4
Isis 55.120.840	4
Isis 79.170.850	4
Block profiles	8
Block 30 - WP30.60.10	8
Block 40 - WP40.80.7	8
Block 50 - WP50.100.6	8
Special façade systems	10
Caïman	10
Mauka	12
Gascogne	14
Mascaret	16
Cassette systems	18
Coque MD	18
Cassette BS	20
Cassette SP	21
Plank profiles (sidings)	22
PWZ-35/300 (visible)	22
Hairplan 300 (secret)	23
PWO-35/300 (secret)	24
ST-500NL (secret)	25
Profile cladding A-symmetrical	26
Eclectic	26

▼ = standard coating side

Introduction

Specials - from ArcelorMittal

Comprehensive range

ArcelorMittal Construction has an extremely extensive product portfolio in terms of metal roof sheeting and wall cladding.

In addition to offering a wide array of standard solutions, we can also cater for any specific wishes and issues you may have. To this end, our 'Specials' department produces a variety of point profiles, plank profiles (sidings), block profiles, cassettes and perforated systems.

Furthermore, we are engaged in continuous development and see to it that we are and will remain an interesting partner.

Various materials

Using various types of metal enables us to lend each and every project the desired aesthetic. Consider in this regard stainless steel, weathering steel (CorTen steel and Indaten®), aluminium and pre-painted steel. Each with its own specific image and characteristics.

Wide array of colours and coatings

ArcelorMittal itself has the widest array of coatings, colours and effects. A polyester, polyurethane or PVDF coating, a metallic or matt finish, mother-of-pearl or rainbow effect—there is a huge selection. Our Colorissime colour chart provides a full overview.

We are also capable of developing coatings and colours in line with your wishes. From a RAL colour to reproducing a pre-existing metallic coating (and colour).

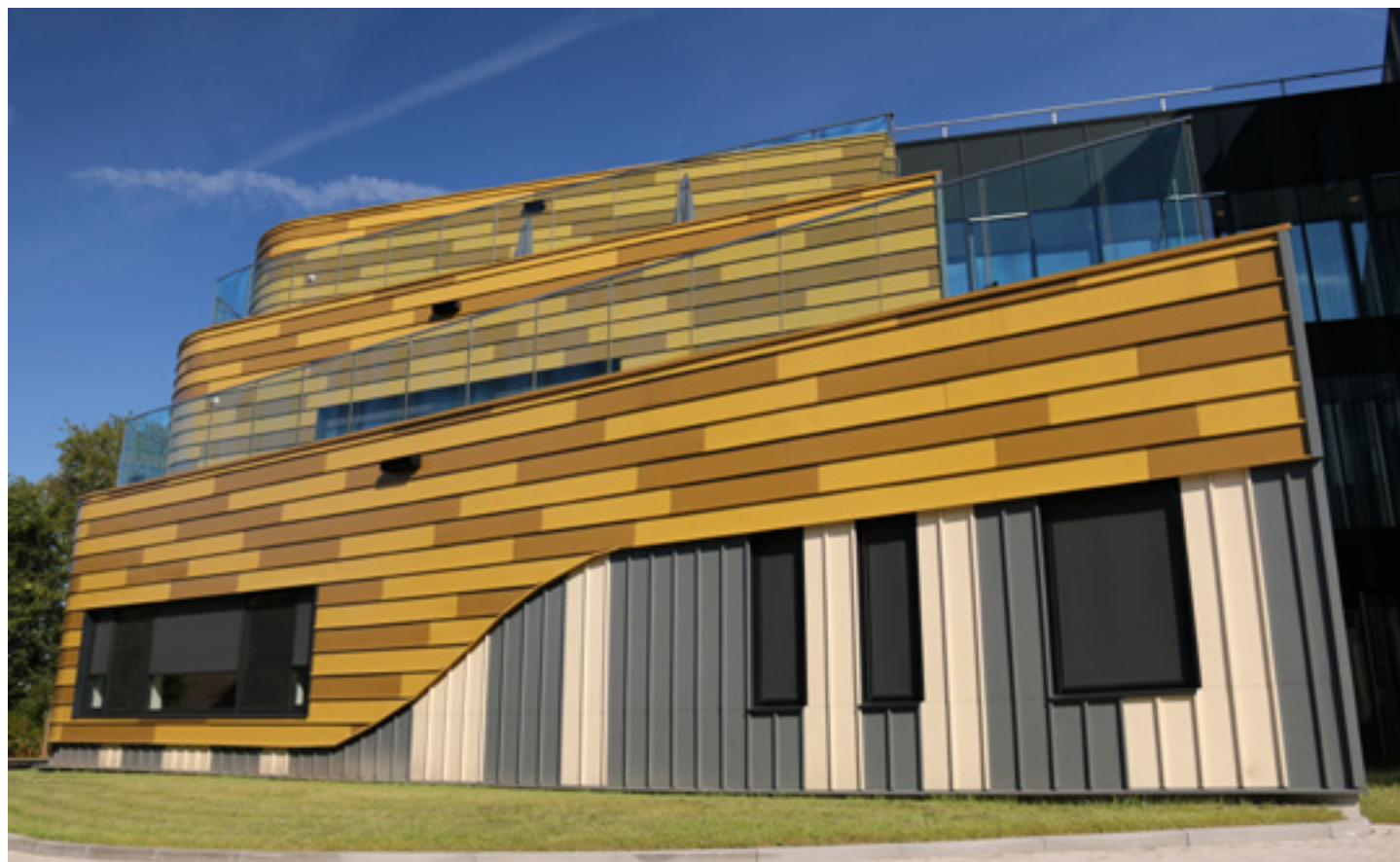
Unique design

Together with you, we will devise a system that in terms of its design will dovetail with your design and specific wishes. All systems are produced by hand, thus ensuring a unique design.

In short

Various types of metal, a specific coating, a variety of colours with accompanying, unique design: create the most beautiful façades together with our 'Specials' department!

This brochure contains a small selection from our 'Specials' product range and provides a good impression of the many options.



Profile cladding

Point profiles

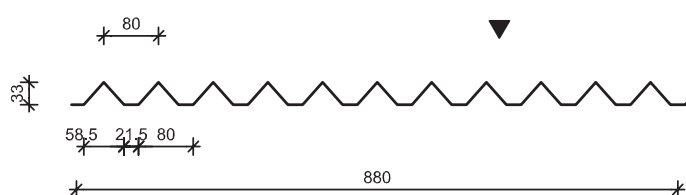
Isis 33/80-11B/HB



Technical characteristics

Nominal steel thickness (mm)	0.63 – 0.75
Weight (kg/m ²)	6.86 – 8.17
Working width (mm)	880
Bandwidth (mm)	1220
Max. length (mm)	6000
Min. length (mm)	750
Profiling	Point profiles
Mounting	Visible
Colours and coatings	Arval Colorissime

Be sure to ask about our custom-made point-profile options.



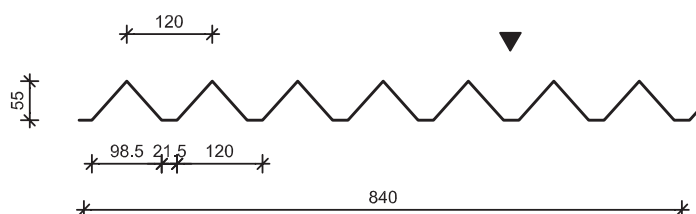
Isis 55/120-7B/HB



Technical characteristics

Nominal steel thickness (mm)	0.63 – 0.75
Weight (kg/m ²)	7.19 – 8.56
Working width (mm)	840
Bandwidth (mm)	1220
Max. length (mm)	6000
Min. length (mm)	750
Profiling	Point profiles
Mounting	Visible
Colours and coatings	Arval Colorissime

Be sure to ask about our custom-made point-profile options.



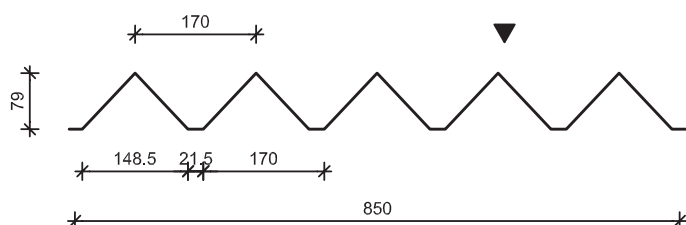
Isis 79/170-5B/HB



Technical characteristics

Nominal steel thickness (mm)	0.63 – 0.75
Weight (kg/m ²)	7.11 – 8.46
Working width (mm)	850
Bandwidth (mm)	1220
Max. length (mm)	6000
Min. length (mm)	750
Profiling	Point profiles
Mounting	Visible
Colours and coatings	Arval Colorissime

Be sure to ask about our custom-made point-profile options.



Profile cladding

Point profiles



Fitness Centre Zevenaar
Architect: 4D architecten



YUST Antwerp
Architect: Polo architecten



Kinepolis Utrecht - ISIS profiles
Architect: Snelder Architecten

Profile cladding

Point profiles



Seat Skoda Hasselt
Architect: Mamu



Seat Skoda Hasselt
Architect: Academy Diepenbeek



Isis 79 Perfo R06T09
Stainless steel 2B

Profile cladding

Point profiles



Deca Packaging – ISIS profiles Herentals
Architect: 2DVW architecten bvba



Deca Packaging – ISIS profiles Herentals
Architect: 2DVW architecten bvba



ISIS Custom-made – Renovation Tiel
Hairexcel 6906 (9006)

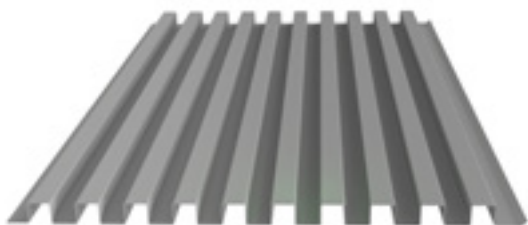


Royal Dutch Mint – Houten
Architect: Wil-Ma

Profile cladding

Block profile

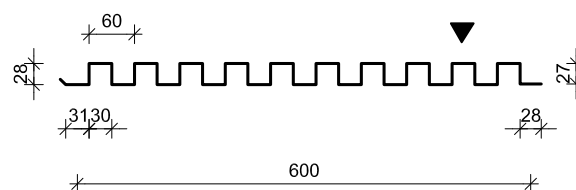
Block 30 type WP30.60.10



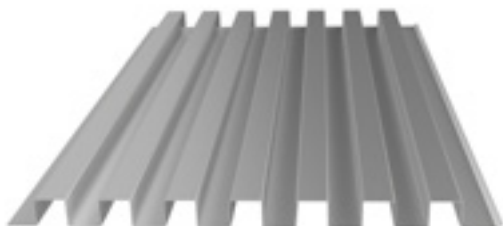
Technical characteristics

Nominal steel thickness (mm)	0.63 - 0.75
Weight (kg/m ²)	6.03 - 7.2
Working width (mm)	600
Bandwidth (mm)	1220
Max. length (mm)	4000
Min. length (mm)	750
Profiling	Block
Mounting	Visible
Colours and coatings	Arval Colorissime

Be sure to ask about our custom-made block options.



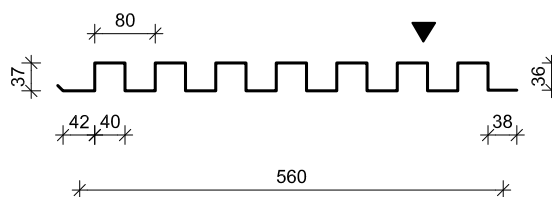
Block 40 type WP40.80.7



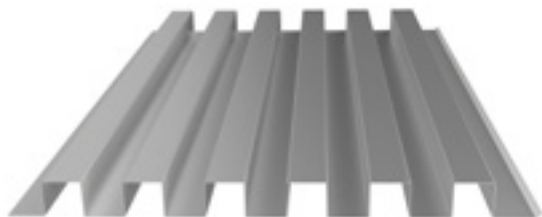
Technical characteristics

Nominal steel thickness (mm)	0.63 - 0.75
Weight (kg/m ²)	9.89 - 11.78
Working width (mm)	560
Bandwidth (mm)	1127
Max. length (mm)	5000
Profiling	Block
Mounting	Visible
Colours and coatings	Arval Colorissime

Be sure to ask about our custom-made block options.



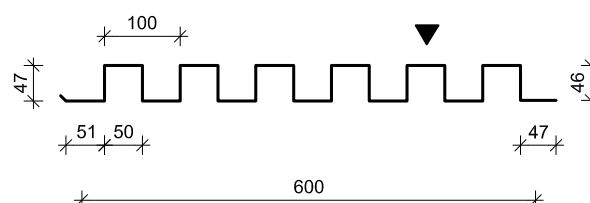
Block 50 type WP50.100.6



Technical characteristics

Nominal steel thickness (mm)	0.63 - 0.75
Weight (kg/m ²)	10.08 - 11.95
Working width (mm)	600
Bandwidth (mm)	1200
Max. length (mm)	6000
Profiling	Block
Mounting	Visible
Colours and coatings	Arval Colorissime

Be sure to ask about our custom-made block options.



Profile cladding

Block profile



Verhulstplein The Hague
Architect: Klunder



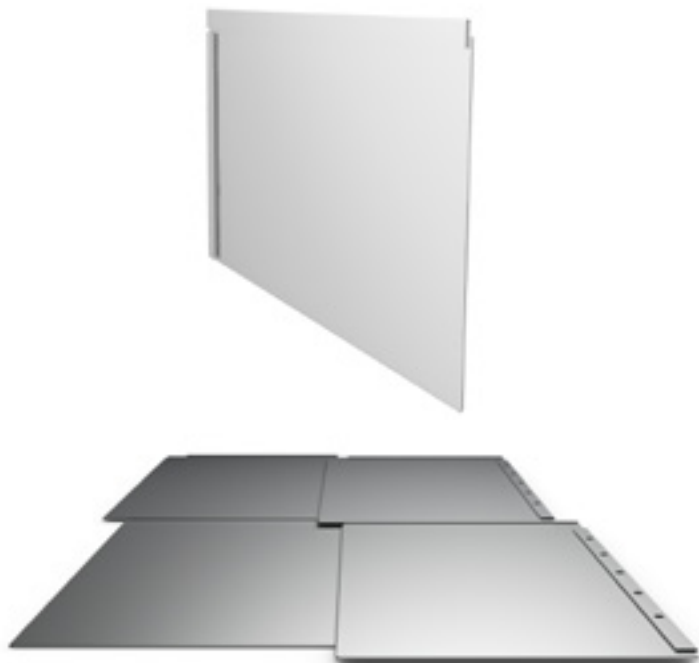
Company building Schoonhoven
Architect: Slangen & Koenis



T-Huis Tilburg
Architect: Timmermans Architecten

Exclusive façade systems

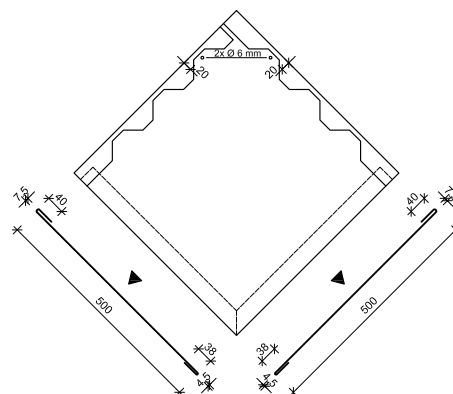
Caiman



Technical characteristics

Nominal steel thickness (mm)	0.75*
Weight (kg/m ²)	Variable
Max. length (mm)	1000*
Max. height (mm)	800*
Profiling	Scale effect
Mounting	Blind
Colours and coatings	Arval Colorissime

* Other steel thicknesses and dimensions upon request.



Korfvis Urk - Caiman system
Intense Bronze 1829

Exclusive façade systems



Fire station Almere
Architect: GAJ



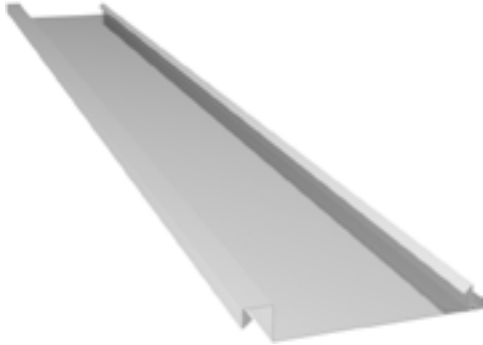
Detail Korfvis Urk - Caïman system
Intense Bronze 1829



Fire station Almere
Architect: GAJ

Exclusive façade systems

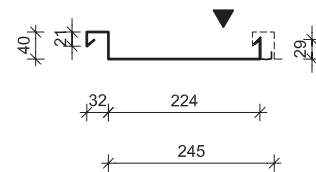
Mauka 40-245-1B / T



Technical characteristics

Nominal steel thickness (mm)	0.63-0.75
Weight (kg/m ²)	Variable
Max. length (mm)	6000*
Profiling	Strips
Mounting	Blind
Colours and coatings	Arval Colorissime

* Can be made longer upon request.



Fire station Loosdrecht
Architect: Richard Benneker

Exclusive façade systems



Gymnasium Kernhem - liner roof - Ede
Architect: Strategie Architecten



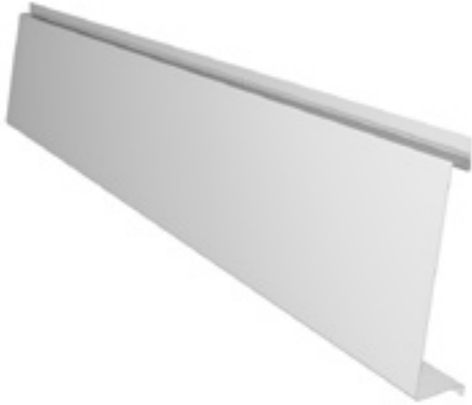
Heijmans ONE
Architect: Mood-Builders



Fire service Loosdrecht
Architect: Vaessen

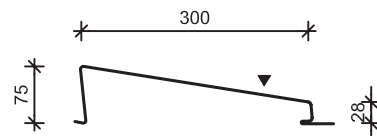
Exclusive façade systems

Gascogne



Technical characteristics

Nominal steel thickness (mm)	1.00
Weight (kg/m ²)	16.50
Working width (mm)	300
Total width (mm)	340
Max. length (mm)	5000
Min. length (mm)	1000
Profiling	Gunwale effect
Mounting	Blind
Colours and coatings	Arval Colorissime



De Zwart Schoonmaak Warmond
Architect: Tordoir van den Berg Architecten

Exclusive façade systems



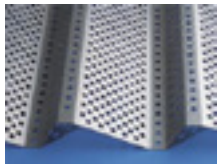
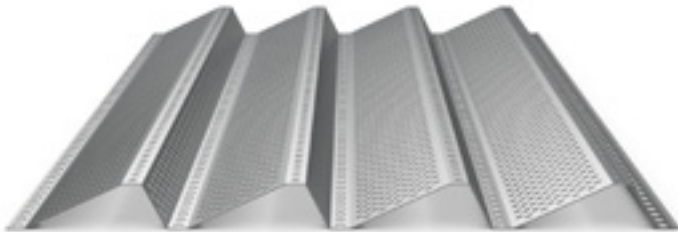
De Zwart Schoonmaak Warmond
Architect: Tordoir van den Berg Architecten



Centre Social Saint Michel Jericho - Nancy - Product: Gascogne

Exclusive façade systems

Mascaret

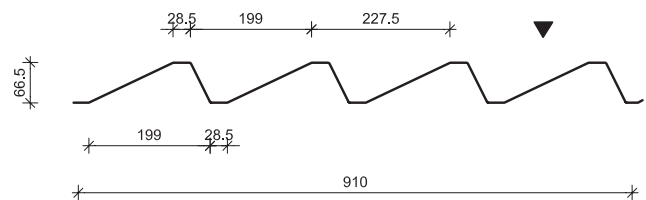


Perforation Ø 10 flow 15.7%
Perforation Ø 11.4 flow 27%

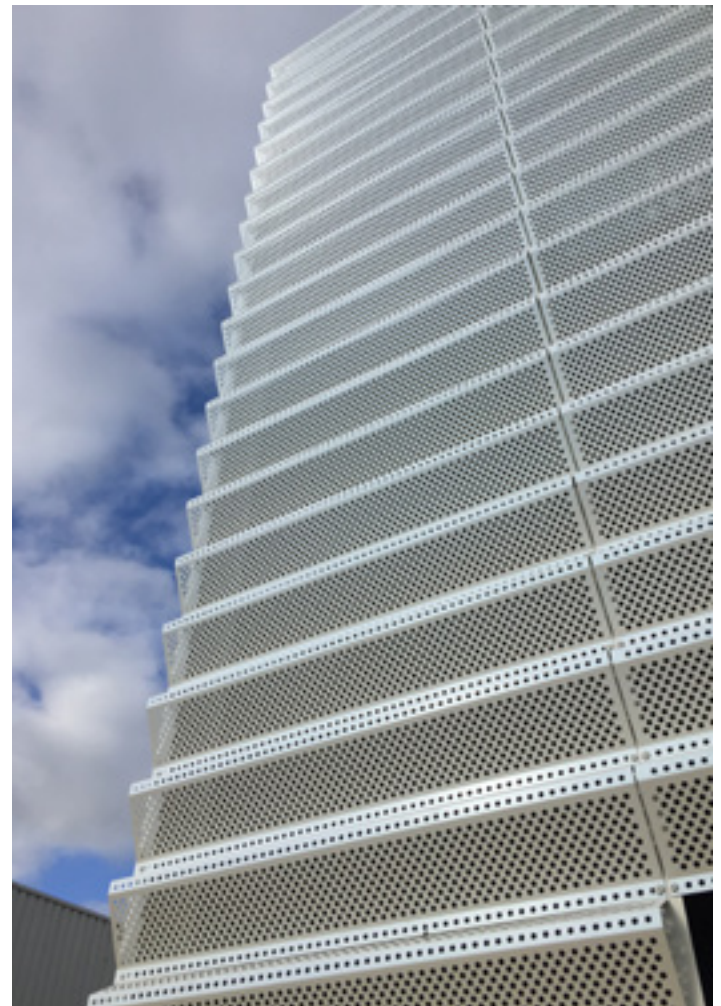
Technical characteristics

Nominal steel thickness (mm)	1.00*
Weight (kg/m ²)	Variable
Working width (mm)	910
Total width (mm)	340
Max. length (mm)	5000
Min. length (mm)	1000
Profiling	Gunwale effect
Mounting	Visible
Colours and coatings	Arval Colorissime double-sided coating 2, Indaten possible

* other steel thicknesses upon request



Salle Multi-Activités de Kaltenhouse (F) - Product: Mascaret
Architect: IXO Architecture

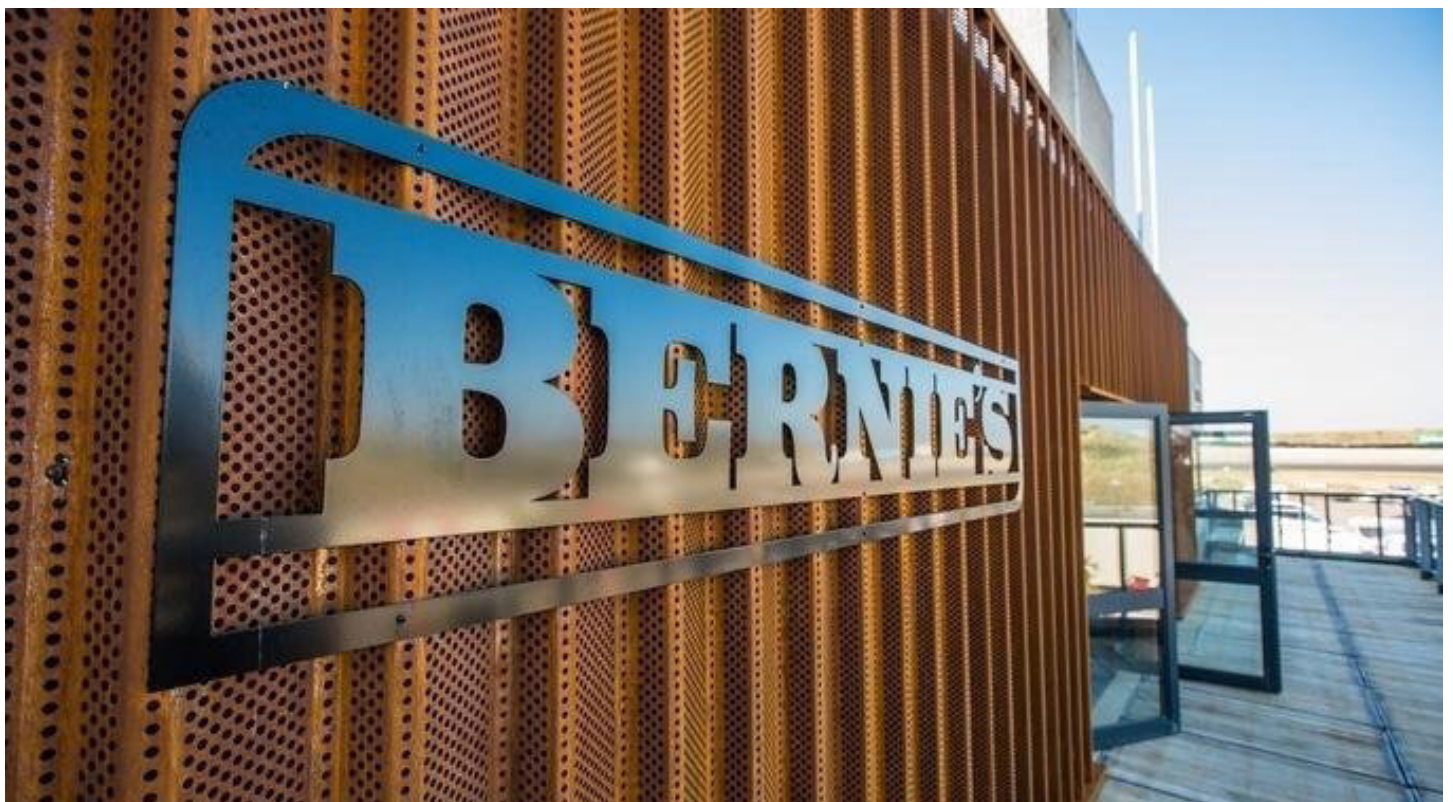


Own premises Reno projects - Product: Mascaret

Exclusive façade systems



Central Exclusive Wormerveer
Mascaret system - Hairexcel 6906



Restaurant Bernie's - Product: Mascaret Indaten®
Circuit Park Zandvoort

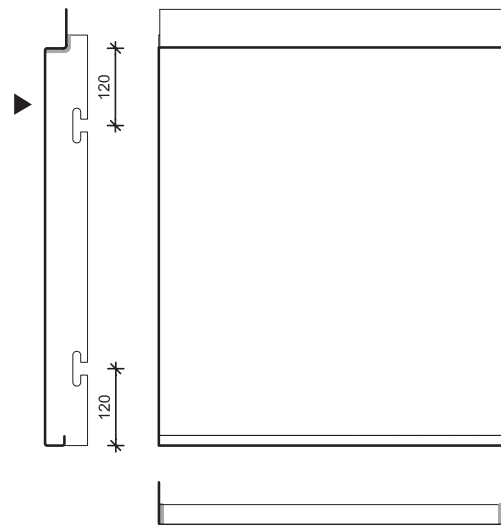
Cassette systems

Coque MD



Technical characteristics

Nominal steel thickness (mm)	1.00-2.00
Weight (kg/m ²)	Variable
Max. length (mm)	3000
Profiling	Flat, cassette façade
Mounting	Blind
Colours and coatings	Arval Colorissime

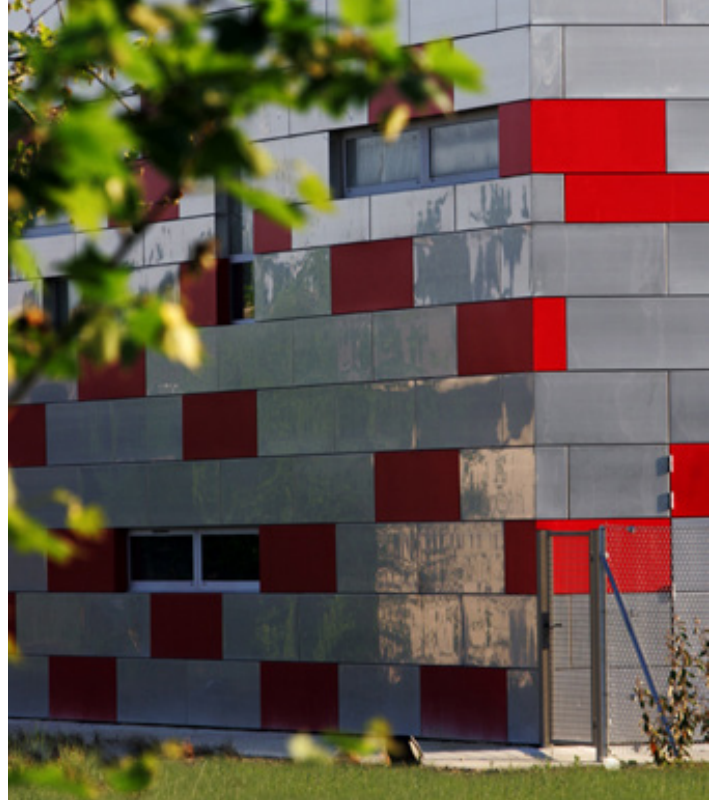


Campus Vesta
Architect: Pattern

Cassette systems



Engelbert - Deom - Product: Coque MD Indaten®



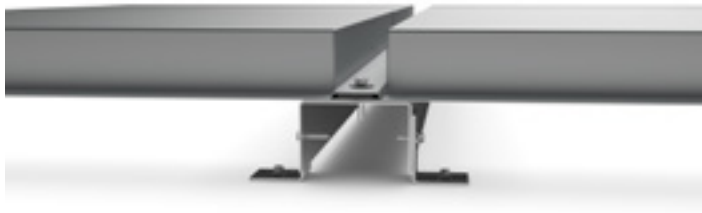
Espace multi generationnel le poinçonnet (F) - Product: Coque MD
Architect: Antoine Reale



Cercle du Lac Louvain-La-Neuve (BE) - Product: Coque MD

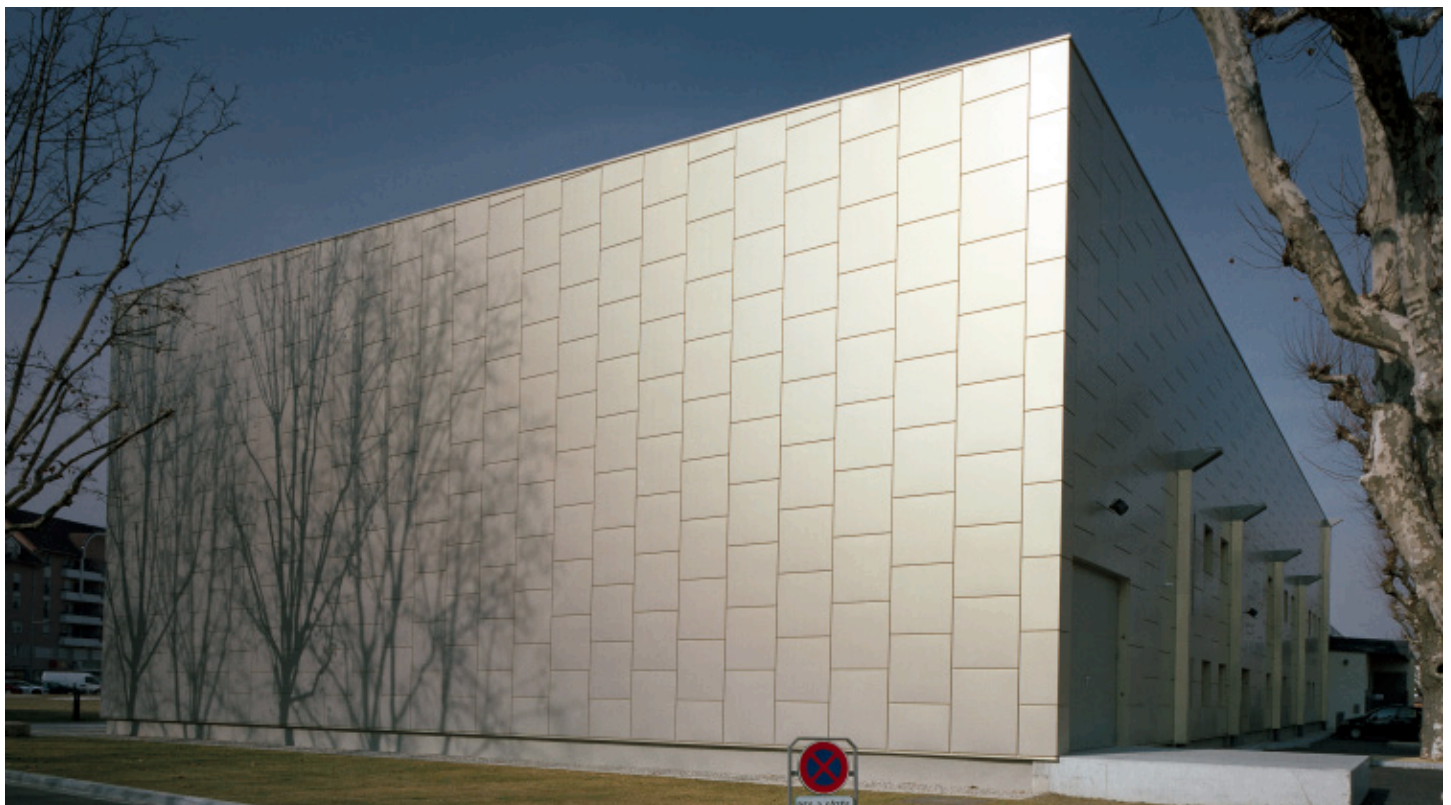
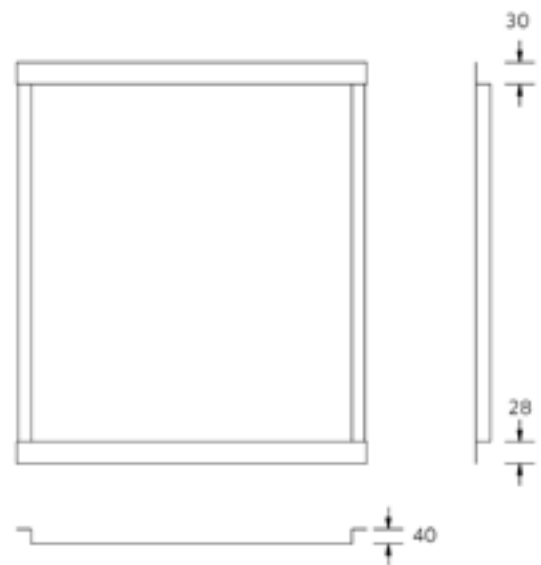
Cassette systems

Cassette BS



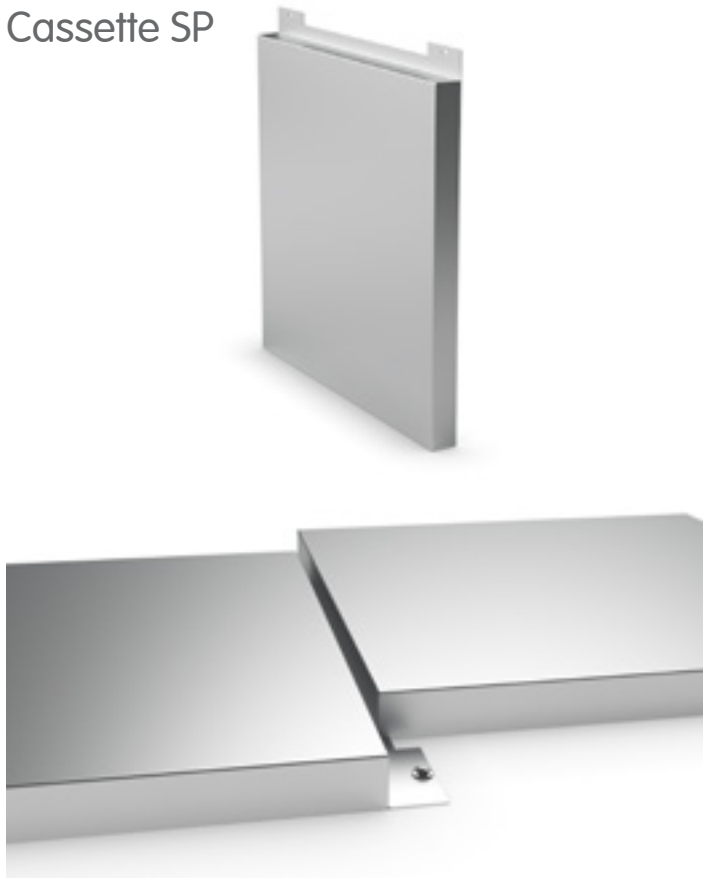
Technical characteristics

Nominal steel thickness (mm)	1.00-2.00
Weight (kg/m ²)	Variable
Max. length (mm)	3000
Profiling	Flat, cassette façade
Mounting	Visible
Colours and coatings	Arval Colorissime



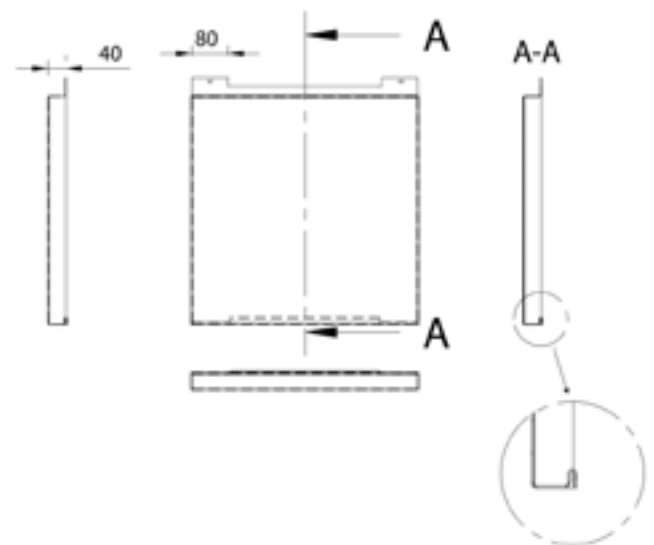
Cassette systems

Cassette SP



Technical characteristics

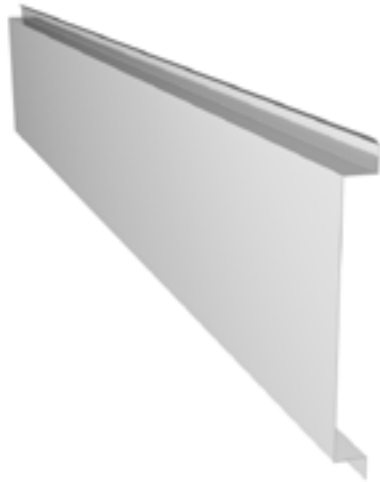
Nominal steel thickness (mm)	1.00-2.00
Weight (kg/m ²)	Variable
Max. length (mm)	3000
Profiling	Flat, cassette façade
Mounting	Blind
Colours and coatings	Arval Colorissime



Autotron Exclusive Rosmalen
Architect: Jacobs

Plank profile visible

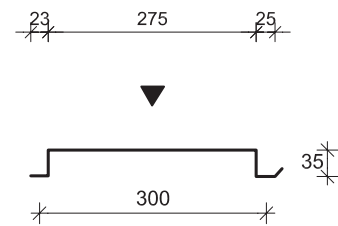
PWZ-35/300



Technical characteristics

Nominal steel thickness (mm)	0.63-1.50
Weight (kg/m ²)	Variable
Max. length (mm)	6000*
Mounting	Visible

* Can be made longer upon request.



Other dimensions upon request.



Renovation Capelle aan de IJssel

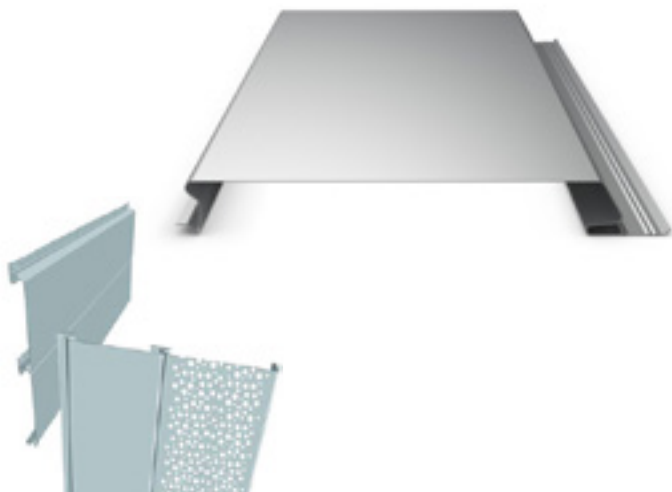


Total - Den Helder



Plank profile secret fixed

Hairplan 300



Technical characteristics

Nominal steel thickness (mm)	1.00
Weight (kg/m ²)	12.56
Working width (mm)	300
Bandwidth (mm)	1000
Max. length (mm)	10000
Min. length (mm)	1900
Profiling	Flat
Mounting	Blind
Colours and coatings*	Arval Colorissime

The plank profile can also be perforated to provide the desired acoustic/aesthetic characteristics.



Koning Koudetechniek Bakel
Architect: Van Houtum architecten



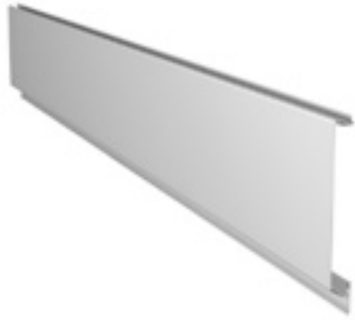
NTR tram depot Nieuwegein
Architect: DP6 architecten



Business Center Roerpoort Roermond
Architect: Ruimtemakers Architecten

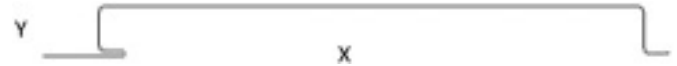
Plank profile secret fixed

PW0-35/300



Technical characteristics

Nominal steel thickness (mm)	0.75-0.88
Weight (kg/m ²)	Variable
Max. length (mm)	4000
Mounting	Secret fixed



X = variable (max. 300)

Y = variable (max. 40)



Perforated plank profiles



Martinihal Vught
Architect: Vaessen bv

Plank profile secret fixed

ST-500NL



Technical characteristics

Nominal steel thickness (mm)	0.75-1.50
Weight (kg/m ²)	Variable
Max. length (mm)	4000
Mounting	Secret fixed



X = variable (max. 500)



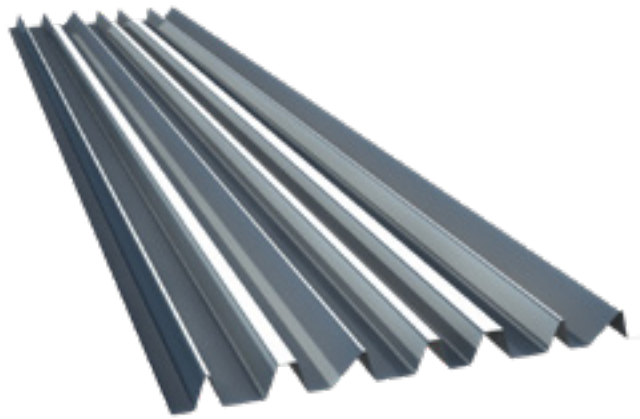
BNP Paribas
Product: ST500NL - Inox BA



Leiden University - De Meeuw
Product: ST500NL - Granite Silky Mat Anthracite

Profile cladding A-symmetrical

Eclectic



Technical characteristics

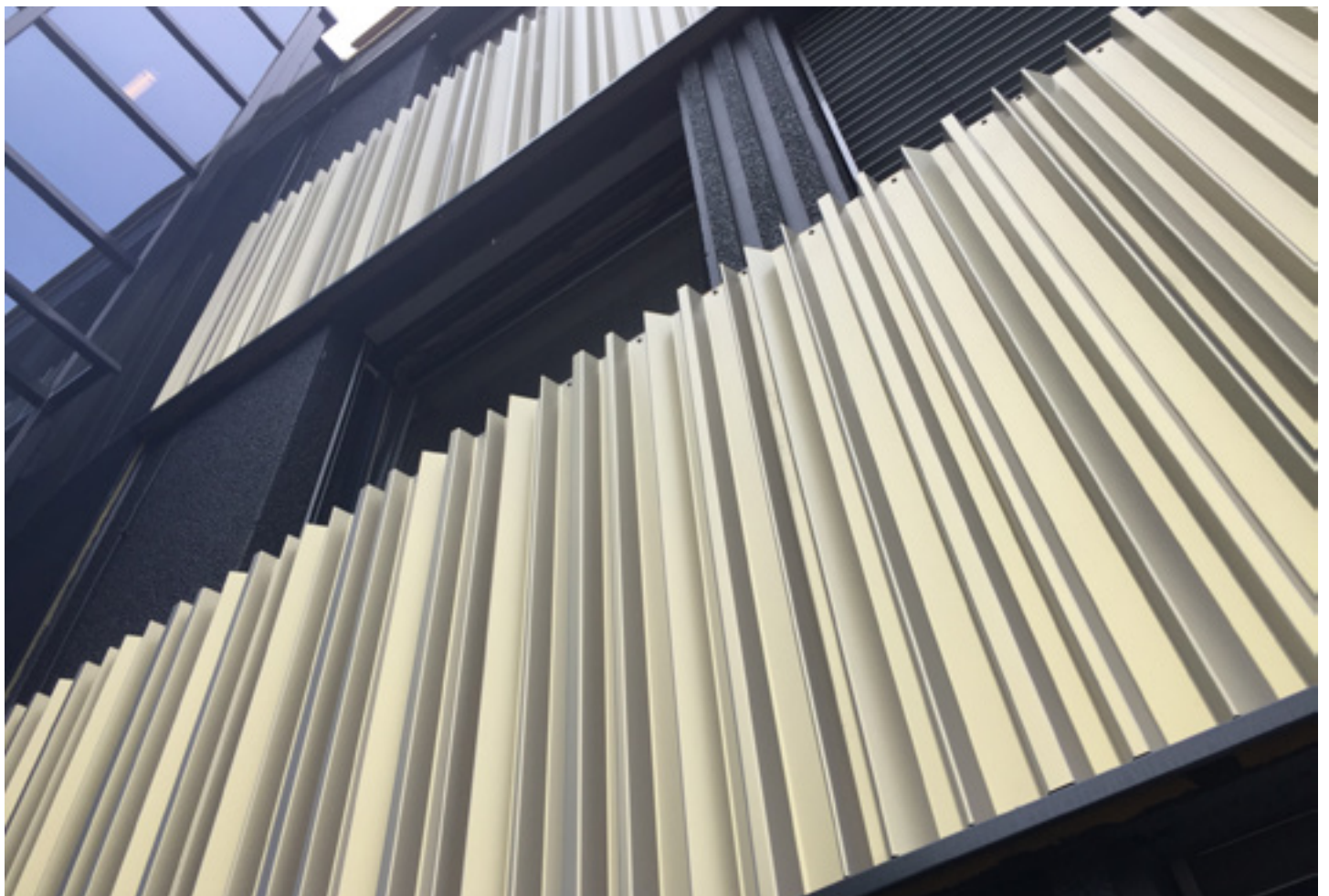
Nominal steel thickness (mm)	0.63-0.75
Weight (kg/m ²)	8.37-9.97
Max. length (mm)	12 (vertically mounted)
Max. length (mm)	9.50 (horizontally mounted)
Profiling	asymmetrical
Mounting	visible
Colours and coatings*	Colorissime



2 types possible:

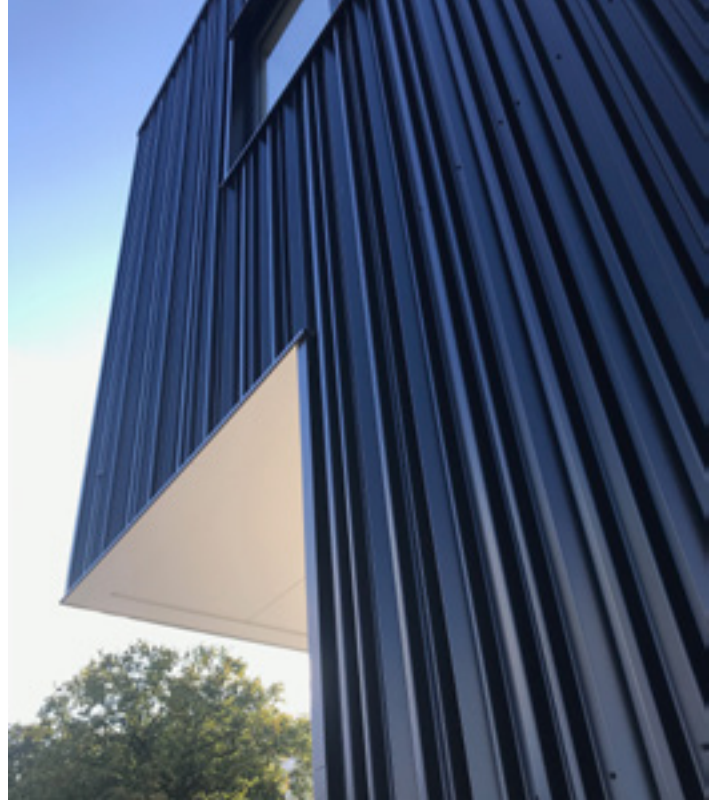
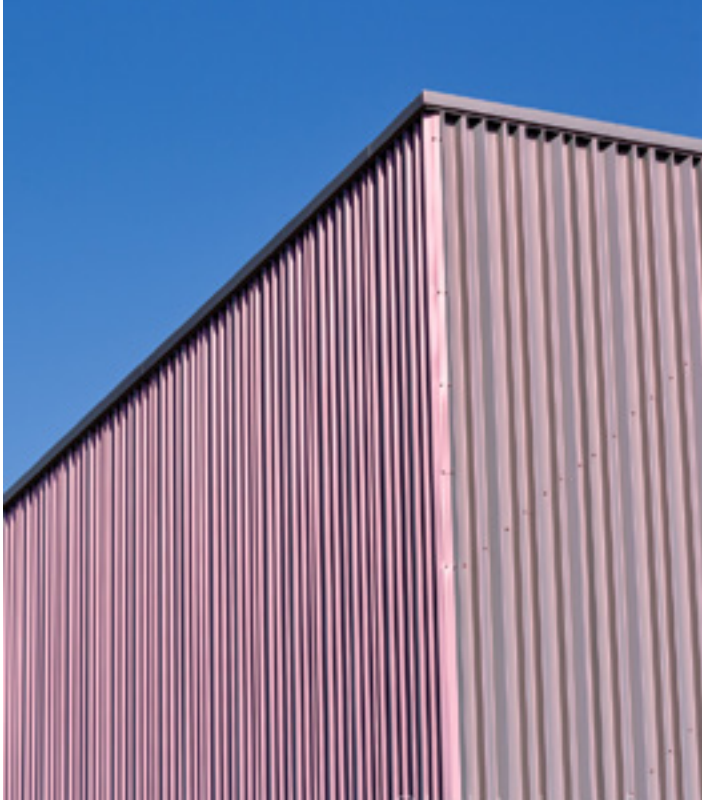
G= 7.35.50 B/HB

D= 7.61.50 B/HB



Renovation Hilversum
Architect: SUM+ Architekten

Profile cladding A-symmetrical



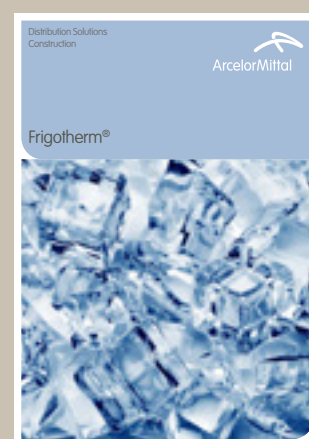
Arma Keukens
Architect: Buro Holdijk



Savenay sports hall
Product: Eclectic - Pearl Camelia Perla 1343
Architect: Le Borgne

We offer a wide range of colours.

Besides our product brochures, be sure to ask for our colour charts to see all the options in terms of colours.



ArcelorMittal Construction embraces a strategy of continuous development. ArcelorMittal Construction reserves the right to make modifications to its products or to the content of this document without prior notice. Although this catalogue was produced with the greatest possible care, we should draw your attention to the fact that we cannot be held liable for any errors that this information might contain, nor for any damage that could arise as a result of misinterpreting the content.

All rights reserved. No part of this document may be reproduced in any way, shape or form whatsoever without the prior written consent of ArcelorMittal Construction.

ArcelorMittal International

24-26 Boulevard d'Avranches
L-1160 Luxembourg
T: +352 4792 2780

Netherlands-Nederland

ArcelorMittal Construction
Biezenwei 2
NL-4004 MB Tiel
T: +31 344 631 746

Belgium-België

ArcelorMittal Construction
Lammerdries 8
2440 Geel
T: +32 14 56 39 43

United Kingdom

ArcelorMittal Construction UK
ArcelorMittal Commercial UK Ltd
Suite F / Campsie Softnet Centre
Enterprise House
Southnet Business Park
Kirkintilloch, Glasgow - G66 1XQ
T: +44 141 530 1485

Sweden-Sverige

ArcelorMittal Construction Sverige AB
Västanvindsgatan 13
SE-65221 Karlstad
T: +46 (0)54 68 83 00

Norway-Norge

ArcelorMittal Construction Norge AS
Tærudgata 1
N-2004 Lillestrøm
T: +47 63 94 14 00

Denmark-Danmark

ArcelorMittal Construction
c/o SM Stål ApS
Østre allé 6
DK-9530 Støvring
T: +45 36 41 30 22

Arval
by ArcelorMittal